

# Sport Weave™

## Fitness Flooring



### Applications:

- Cardio Areas
- Cycling Rooms
- Locker Rooms
- Pool Areas
- Childcare Areas
- Lobbies/Foyers
- Walkways
- Offices

### The Look and Feel of Carpet with the Durability of Rubber

SportWeave Fitness Flooring combines the comfortable appearance of carpet with the versatility, ease of maintenance and durability of a rubber surface. Its polypropylene fiber withstands moisture, stains, and the long-term placement of free weights and selectorized machines. The fast-drying surface is antimicrobial, so it won't rot, stain or mildew, and can be cleaned employing standard shampooing methods – all backed by a 7-year abrasive wear warranty!

SportWeave comes in a wide variety of colors and textures, and can be custom cut into patterns, curves, borders, and logos. It's the perfect solution for foyers, walkways, offices, weight rooms, cardio areas, group cycling areas, locker rooms, childcare, and more.

You can't find a TOUGHER floor!



Learn about how to keep your floor like new at  
[www.centaurmaintenancesupplies.com](http://www.centaurmaintenancesupplies.com)

***Centaur***  
Floor Systems

135 Chapala Street  
Santa Barbara, CA 93101  
Phone (805) 957-0182  
Fax (805) 957-0125  
Toll-Free (800) 536-9007  
[www.centaurfloors.com](http://www.centaurfloors.com)

***Centaur***  
Floor Systems

# Sport Weave™ Fitness Flooring



Slant Modular Tiles

## Features and Benefits

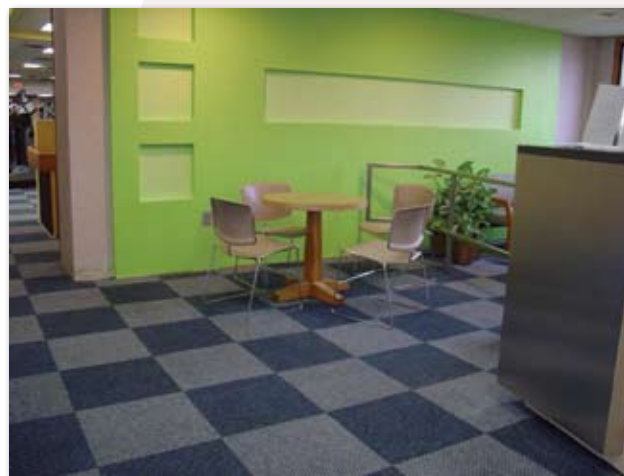
SportWeave's polypropylene fiber is far more durable than traditional nylon carpet, which means it easily stands up to the placement of heavy furniture and equipment that can easily be moved around without having to worry about indentions. It features a waterproof back, is fast-drying and anti-microbial, so it repels moisture and stains that are often found in heavily abused areas such as foyers, sanctuary aisles, recreational rooms, pool areas, locker rooms and childcare areas. SportWeave Tiles are available in a total of eighteen different styles and colors that can be mixed, cut and shaped for endless design possibilities.

## Product Details

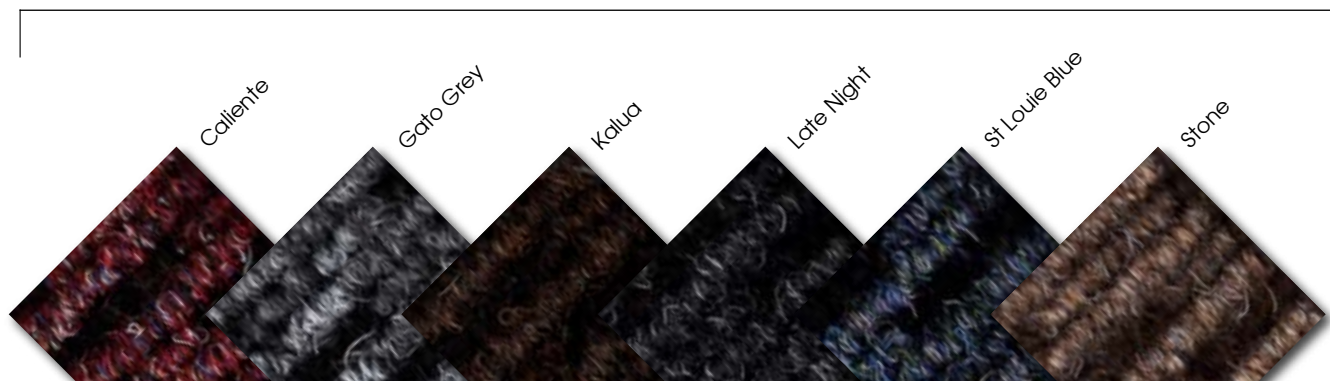
SportWeave tiles are comprised of a polypropylene fiber that is needle punched onto a waterproof backing. Needle punching of the fiber prevents flooring from zipping and fraying like standard tufted carpet. The fast-drying surface is antimicrobial, so it won't rot, stain or mildew. Tiles are easy to install, and are glued down using a multipurpose adhesive. Best of all, SportWeave can be cleaned using standard commercial vacuuming and shampooing methods.

## Warranty

SportWeave carries a limited **7-year abrasive wear warranty** on indoor installation. Warranty requires product installation over a dry, smooth, hard, flat surface free of cracks and foreign substances. SportWeave must be installed using the appropriate adhesives, or approved equal and must also be maintained according to maintenance instruction.



Jazz Tiles



## SPORTWEAVE SPECIFICATIONS

| PRODUCT COMPOSITION                          | STANDARD/NORMS                  | DATA                                       |
|--|---------------------------------|--|
| Manufacturing Process                        | ISO 2424                        | Needle Punch                               |
| Surface Aspect                               | ISO 2424                        | Patterned                                  |
| Pile Yarn Composition                        | CEE 83/623                      | 100% Solution-Dyed UV Stable Polypropylene |
| Primary Backing                              | ISO 2424                        | Bitumen                                    |
| <b>PRODUCT DIMENSIONS</b>                    |                                 |  |
| Pile Height (+ or - 0.5mm)                   | ISO 1766                        | 1.26 in.                                   |
| Total Height (+ or - 7.5%)                   | ISO 1766                        | .37 in.                                    |
| Pile Weight (+ or - 7.5%)                    | ISO 8543                        | 33.9 oz/sy                                 |
| Total Weight (+ or - 7.5%)                   | ISO 8543                        | 131 oz/sy                                  |
| Total Size (+ or - 0.2%)                     | ISO 3018                        | 19 11/16" x 19 11/16"                      |
| <b>ELECTROSTATIC PROPERTIES</b>              |                                 |  |
| Dimensional Stability                        | EN 986                          | Pass                                       |
| Walk on Test                                 | ISO TR 6356                     | < 2 KV (IBM/ICL)                           |
| Electrical Resistivity Vertical & Horizontal | DIN 54345                       |  |
| Sound Insulation                             | ISO 140-B                       | > or = 24 db                               |
| Thermal Retention                            | ISO 8302                        | 0 12 m_KW                                  |
| <b>COLOR FASTNESS</b>                        |                                 |  |
| To Light                                     | ISO 105 B02                     | > or = 6                                   |
| To Water                                     | ISO 105 E01                     | 5  |
| To Shampoo                                   | BS 1006                         | 4-5  |
| To Rubbing Dry & Wet                         | ISO 105 x 12                    | 4-5 dry/wet                                |
| <b>FLAMMABILITY RATING</b>                   |                                 |  |
| Flooring Radiant Panel Test                  | ASTM E648/DIN 4102/CPSC FF 1-70 | Passes Federal Flammability Standard       |
| Pill Test                                    | ISO 6925/ASTM D2829             | Pass                                       |
| Hot Metal Nut Test                           | BS 4790/BS 5287                 | Low Radius                                 |
| Coefficient of Friction Wet & Dry            | ASTM - C1028-89                 | Wet, .63 Dry, .65                          |