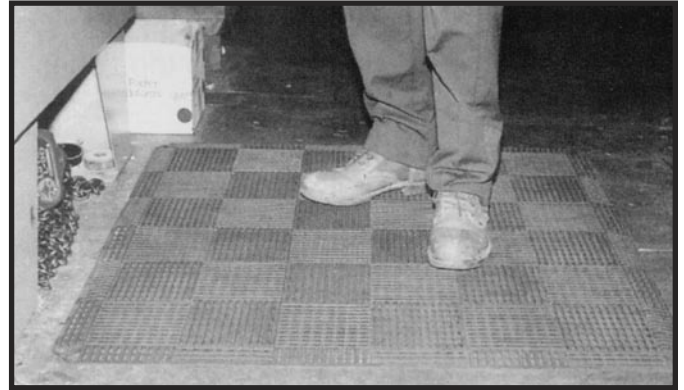


E·N·V·I·R·O·T·I·L·E·S

THE ULTIMATE INTERLOCKING NON-SLIP FLOOR TILE



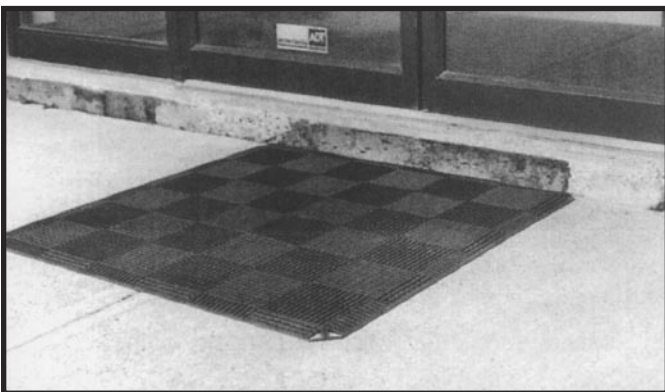
SHOWER/DRY OFF AREAS



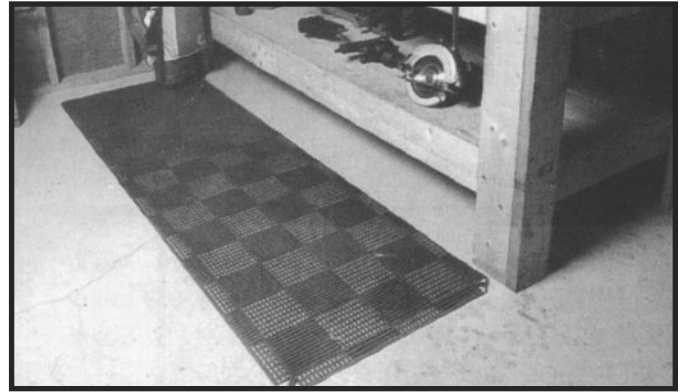
ANTI-FATIGUE MATS



LAUNDRY ROOMS/WET AREAS



ENTRY/FLOOR MATS



WORK STATIONS

APPLICATIONS

Locker Rooms • Shower Areas • Factories • Bottling and Canning Plants • Assembly Lines
Power Stations • Garages • Chemical Plants • Marine Installations • Walkways around Machinery
Freezers • Machine Shops • Catering Industry • Restaurants and Hotel Kitchens
Greenhouses • Change Rooms • Laundromats • Truck Decks • Fatigue Mats

THE ULTIMATE INTERLOCKING NON-SLIP INDUSTRIAL SURFACE

MODULAR TILE FORMAT

12" x 12" (30.5 cm x 30.5 cm). May be assembled to exact user specifications.

UNIQUE INTERLOCKING SYSTEM

Provides continuous surface-no trip zones-allows user to roll cart easily

ANTI-SKID

Floor hugging design and surface design give maximum gripping action on both sides of mat.

DRAINAGE

394 holes per square foot. Will not allow fluids to collect on mat.

U.V. STABILIZERS-FUNGUS INHIBITORS

Are part of P.V.C. formulation - helps fight bacteria.

WRAP-AROUND EDGE

Totally new and unique design allows user to assemble complete mat to prevent tripping. Exclusive Wrap Around provides integrated corner mats providing smooth access to mat for both pedestrians and rolling equipment. Eliminates dangerous gaping holes in corners.

COLOR

Charcoal, Teal, White, Blue

FIRE RESISTANT

Will not sustain combustion

RESISTANT

P.V.C. is impervious to most chemicals, oils and grease. Mold and mildew proof.

MATERIAL

Contains No Metal Parts to rust or corrode.

SNAP-ON ASSEMBLY

No tools required

PART #	DESCRIPTION	STYLE	COLOR
ECT-1212-Grey	12" x 12" x 3/8" Tile	Slotted	Charcoal (dark grey)
ECT-1212-Green	12" x 12" x 3/8" Tile	Slotted	Teal
ECT-1212-White	12" x 12" x 3/8" Tile	Slotted	White
ECT1212-Blue	12" x 12" x 3/8" Tile	Slotted	Blue
ECT-1212-12 GR	12" x 12" x 3/8" Tile	Solid Top	Charcoal
ECT-1212-Edge-GR	12" x 12" x 3/8" Edge	Slotted	Charcoal
ECT-1212-Edge-GE	12" x 12" x 3/8" Edge	Slotted	Teal
ECT-1212-Edge-WT	12" x 12" x 3/8" Edge	Slotted	White
ECT-1212-Edge-BL	12" x 12" x 3/8" Edge	Slotted	Blue
ECT-1212-Edge-YW	12" x 12" x 3/8" Edge	Slotted	Yellow (Safety)

Note: Solid top available in all colors special order

Centaur
Floor Systems

135 Chapala Street
Santa Barbara, Ca 93101
800-536-9007
Fax 805-957-0125
Www.centaurfloors.com